



Edge Hill
University

Introduction

Thank you for your interest in the vacancy for Pro Vice-Chancellor & Dean (Faculty of Health, Social Care & Medicine) at Edge Hill University.

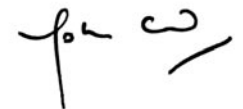
We are seeking to recruit an exceptional academic leader to join our senior leadership team. The right individual will have substantial strategic capability and vision and a track record in delivering a high quality and customer focussed student experience.

We would expect you to be able to demonstrate the delivery of these attributes in your current role in the Higher Education sector, in particular focussing on creating an environment for outstanding student experience and a compelling and achievable vision for the future of the Faculty of Health, Social Care & Medicine.

Edge Hill University is based on an attractive, award-winning 160-acre campus in Lancashire, close to Liverpool and Manchester and is ranked as Gold in the Teaching Excellence Framework (TEF). If you want to be part of a successful and exciting University, to really add value to what we do and to be a major contributor to the progress of the University in the future, then this could be the role for you.

If you wish to discuss this opportunity further then you can contact me by email on john.cater@edgehill.ac.uk.

With best wishes,



John Cater
Vice-Chancellor
Edge Hill University



Edge Hill University

About the University

Edge Hill University is based on an attractive, award-winning 160-acre campus in Lancashire, close to Liverpool and Manchester. The institution has been providing higher education for more than 135 years, with a mission to create opportunity from knowledge. The University is an academic community comprising of more than 11,000 full time undergraduate and postgraduate students and a further 1,800 registered on part time programmes.

Edge Hill is ranked as **Gold** in the **Teaching Excellence Framework (TEF)**, the government's evaluation of excellence in teaching quality, learning environment and student outcomes. Gold is the highest possible TEF rating, indicating that the institution is 'of the highest quality found in the UK' and is 'delivering consistently outstanding teaching, learning and outcomes for its students.' The specific findings for Edge Hill University indicate that 'students from diverse backgrounds achieve consistently outstanding outcomes', and that 'very high proportions of students continue with their studies and progress to employment or further study.'

Edge Hill is one of the select few universities to have held the coveted UK **University of the Year** title, awarded by *Times Higher Education* (2014/15). It also has been named **University of the Year for Student Retention** by *The Times* and *The Sunday Times Good University Guide 2018*, who wrote that it is 'firmly establishing itself among the top post-1992 universities.' In 2018 Edge Hill University was acknowledged as one of the world's finest teaching institutions, winning a **Global Teaching Excellence Spotlight Award** in recognition of 'the quality of support and engagement infrastructure for students.'

The University's student accommodation has been voted **best student accommodation in the UK and Ireland** and **best value for money** (National Student Housing Awards 2018).

Our strengths in **employability** are demonstrated by 97.3 per cent of our graduates finding work or further study within six months of graduating (HESA figure for 'all leavers'), and reinforced by awards including a top ten shortlisting in the **National Graduate Recruitment Awards** (TARGETjobs 2018).

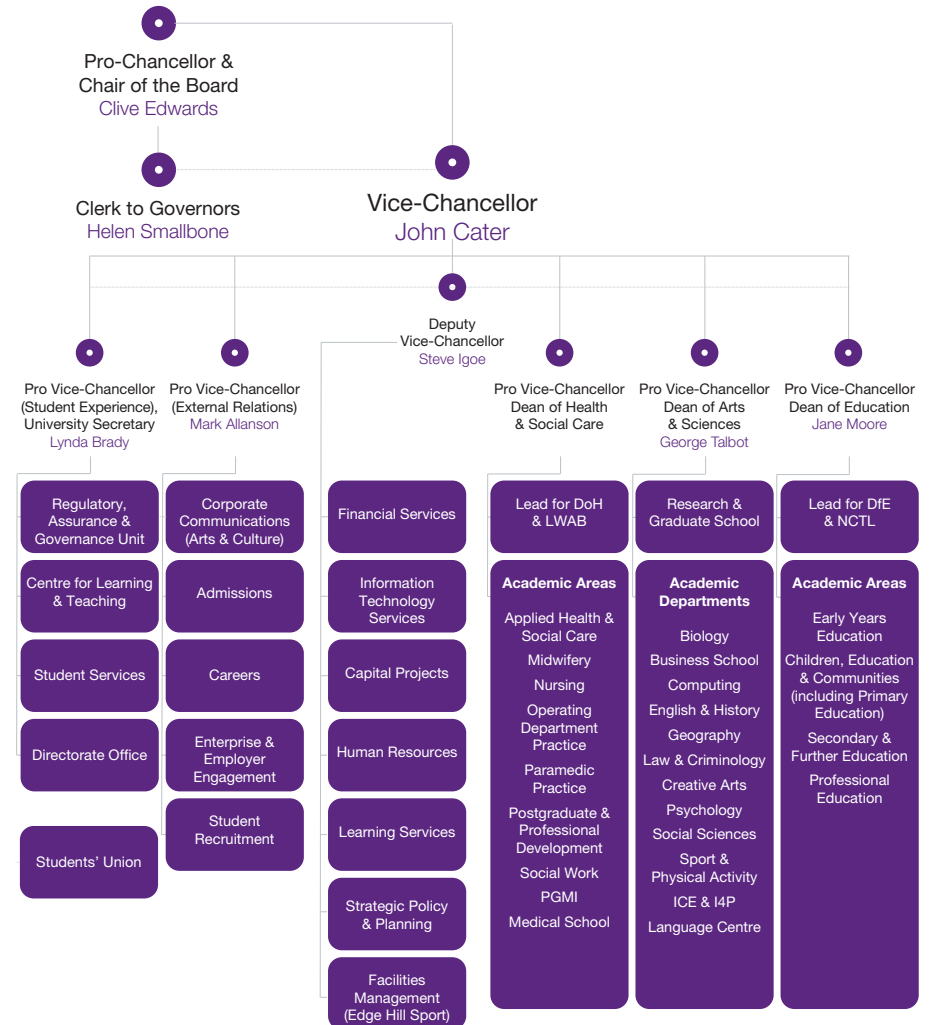
Times Higher Awards have recognised our **Excellence and Innovation in the Arts** (Highly Commended, 2015) and **research** in sport and education, working in partnership with Everton in the Community the official charity of Everton Football Club (**Outstanding Contribution to the Community**, 2016).

We were also shortlisted - for the fifth time - for THE University of the Year in 2020/21.



About the University

University Organisation chart



Organisation



Award-Winning Workplace

Award-Winning Workplace

Edge Hill University has 3,416 staff working across three Faculties and a range of professional support services. Most staff are based on our 160-acre campus in Ormskirk with others based in Liverpool and Manchester.

The University has been ranked **Best University Workplace** (*Times Higher Education* 2015), judged **Best UK Employer** (European Business Awards 2016) and Highly Commended for **Workplace of the Year** in *Times Higher Education* Leadership and Management Awards 2017. Edge Hill was awarded an Athena SWAN Institutional Bronze Award on 1st October 2015.

“Edge Hill University is an environment in which you can flourish and achieve your full potential. Our award-winning Ormskirk campus is an excellent place to work, and colleagues receive competitive salaries, with high quality pension provision and excellent holidays alongside a wide range of staff social and well-being benefits” – John Cater, Vice-Chancellor



Region

Located in the heart of the North West, Edge Hill University is situated close to the thriving market town of Ormskirk and the vibrant cities of Liverpool and Manchester.

The seaside resort of Southport is nearby and the University is only a short distance from stunning areas of unspoilt natural beauty, such as the sand dunes and pinewoods of Formby.

Described as 'the best place in England to bring up a family' (by *The Telegraph*, reporting on The Family Friendliness Index), the region has excellent schools, nurseries and green spaces.



Region



Faculty of Health, Social Care & Medicine

Faculty of Health, Social Care & Medicine

The Faculty of Health, Social Care and Medicine at Edge Hill University is one of the leading providers of education to the health and social care workforce in the region, with a growing national and international teaching and research profile. It has excellent relationships with a wide range of health and social care providers, which ensures that its work is of direct relevance to, and impacts positively on, the rapidly changing medical/clinical education environment. The Faculty is also home to the Edge Hill University Medical School. Building on ten years' experience of delivering MCh and MMed programmes, the Medical School welcomed its first cohort of MBChB students in 2019.

As a contributor to the University's TEF Gold status, the Faculty recognises the importance of outstanding learning and teaching and sector-leading support, enabling all students to fulfil their potential. Whilst this remains the single most important priority, the University was the most improved performer nationally in the 2014 Research Excellence Framework, and the Faculty has a key role in sustaining and improving that performance in the 2021 iteration and in preparing for REF 2027/8.

Our vision is to produce outstanding graduates who are capable and reflective practitioners, intellectually engaged, skilled in their role and committed to those they support. If you share and can articulate this vision we look forward to receiving your application.

Edge Hill University
St Helens Road
Ormskirk
Lancashire
L39 4QP
United Kingdom

 edgehill.ac.uk

 facebook.com/edgehilluniversity

 twitter.com/edgehill

 instagram.com/edgehilluniversity
